



**MEGAJOULE**

*Rethinking Energy Worldwide*

## Corporate Presentation

March 2021

# Index



About MEGAJOULE



How we work



Team & Partners



References & Clients



Services



# About MEGAJOULE

Since 2004

[www.megajoule.pt](http://www.megajoule.pt)

[megajoule@megajoule.pt](mailto:megajoule@megajoule.pt)



MEGAJOULE  
Headquarters

Travessa Honório Lima, 16  
4465-171 São Mamede de  
Infesta  
Portugal



MEGAJOULE  
Brazil

Av. Senador Virgílio Távora  
1500 - Sala 103  
Edifício The One Tower  
Aldeota - Fortaleza - Ceará  
CEP 60.170-078



MEGAJOULE  
Adria

Pakoštanska 6  
10 100 Zagreb  
Croatia



MEGAJOULE  
Argentina

34, N° 678  
1900 La Plata, Buenos Aires  
Argentina



MEGAJOULE  
Turkey

Nejat Eczacıbaşı Binası  
Sadi Konuralp Cd.,  
Kat: 2 Şişhane,  
İstanbul, Türkiye



# About MEGAJOULE



**Vision** | Lead the national market and be an international reference as wind and solar energy consultants, with a focus on the quality of the service to our Clients



**Mission** | To contribute for the development of economically feasible renewable energy projects, by offering excellence consultancy services in the different stages of the project to all the market players



**Ethics & Independence** | As a guarantee of confidence, the safety and autonomy of our conclusions, doubts and opinions are for our Clients the promise of a responsible partner



**Effectiveness & Rigour** | The only useful information is the one that arrives on time and the only safe information is the one that is understandable. We put our efforts in bringing science and technology to the projects of our Clients



**Proximity & Dedication** | Your projects are our projects. We assume with commitment our task of reducing risks and add value to our Clients assets. We work as closely and committed as any department of your own company



# MEGAJoule Group



# How we work

## The organization

Full scope, global, renewable energy consultancy and engineering



Pre-feasibility

Development

Implementation

Operation

# MEGAJoule Group - Management Team



Miguel Ferreira

Mechanical Engineer and MBA. Wind energy consultant since 1992.

Founder, CEO, CFO

Coordinates global strategy and business development, as well as corporate international relations.



Paulo Pinto

MSc in Mechanical Engineering. Wind energy consultant since 1997.

Founder, CEO, COO

Coordinates internal operations, complex project management and human resources.



Edo Jerkić

Has a master degree in Electrical Engineering (Univ. Zagreb)

CBDO

Responsible for business development, new opportunities, coordination of departments and negotiations and advisory on the most important projects.



# MEGAJoule Group



Ricardo Guedes

Technical Manager and Country Manager Brazil  
Mechanical Engineer (FEUP)  
MEGAJoule founder, he has been wind resource consultant since 2000  
Regular member of WindEurope's annual conference programme committee



Leo Jerkić

Head of engineering department and Country Manager for Central and Eastern Europe  
Has a master degree in Electrical Engineering (Univ. Zagreb)  
Project manager and lead energy analyst



João Rocha

Head of engineering department and Country Manager for Portugal  
Has a degree in Mechanical Engineering (Univ. Porto)  
Project manager and lead energy analyst

### Country Managers

**João Rocha** • **Leo Jerkić** • **Ricardo Guedes** • **Giselle Battaiotto** • **Sadik Çetinkaya**  
[Portugal] [CEE & SEE] [Brazil] [Argentina & Spain] [Turkey]





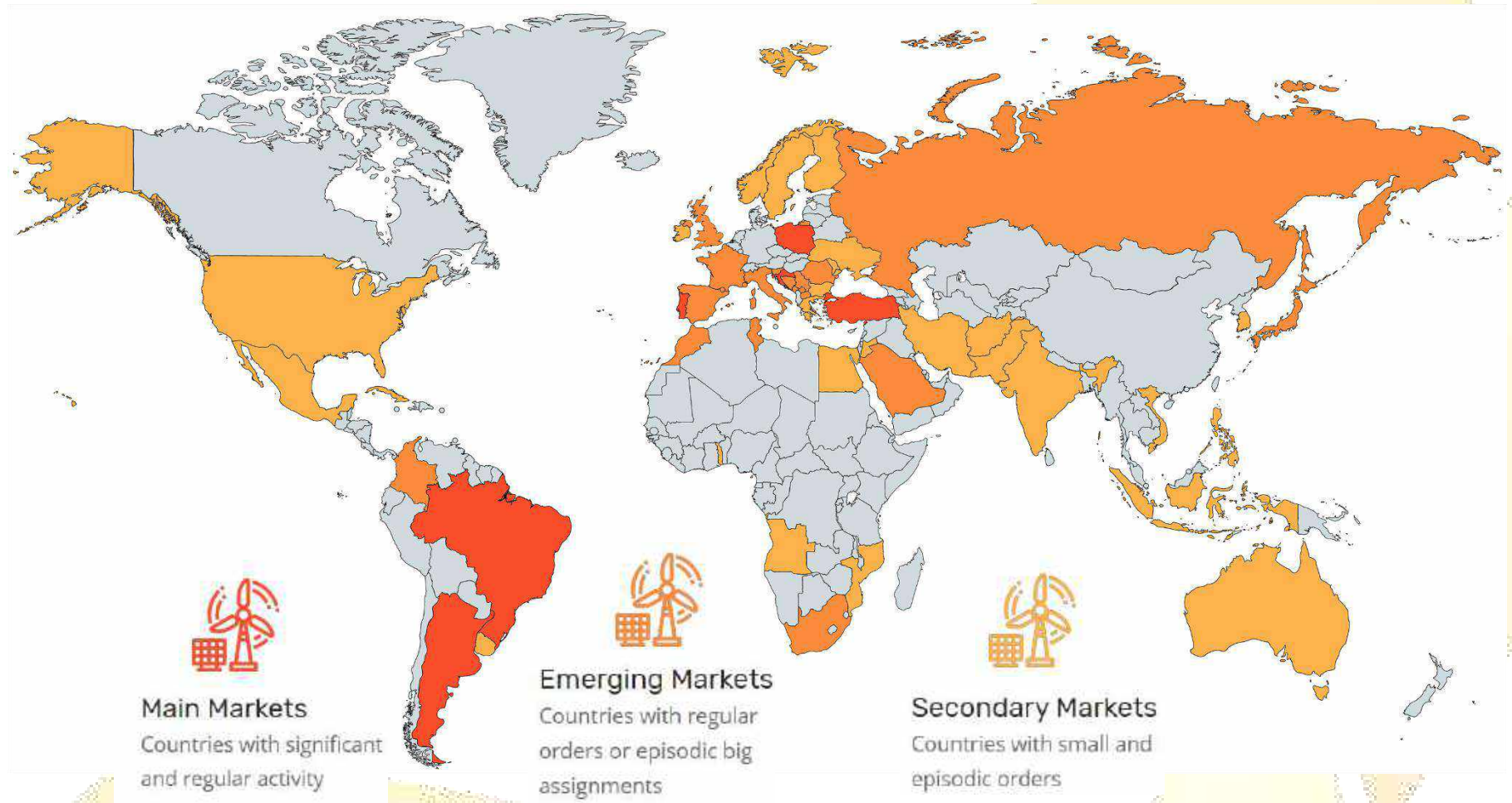
# Partners



Ricardo Guedes



# References



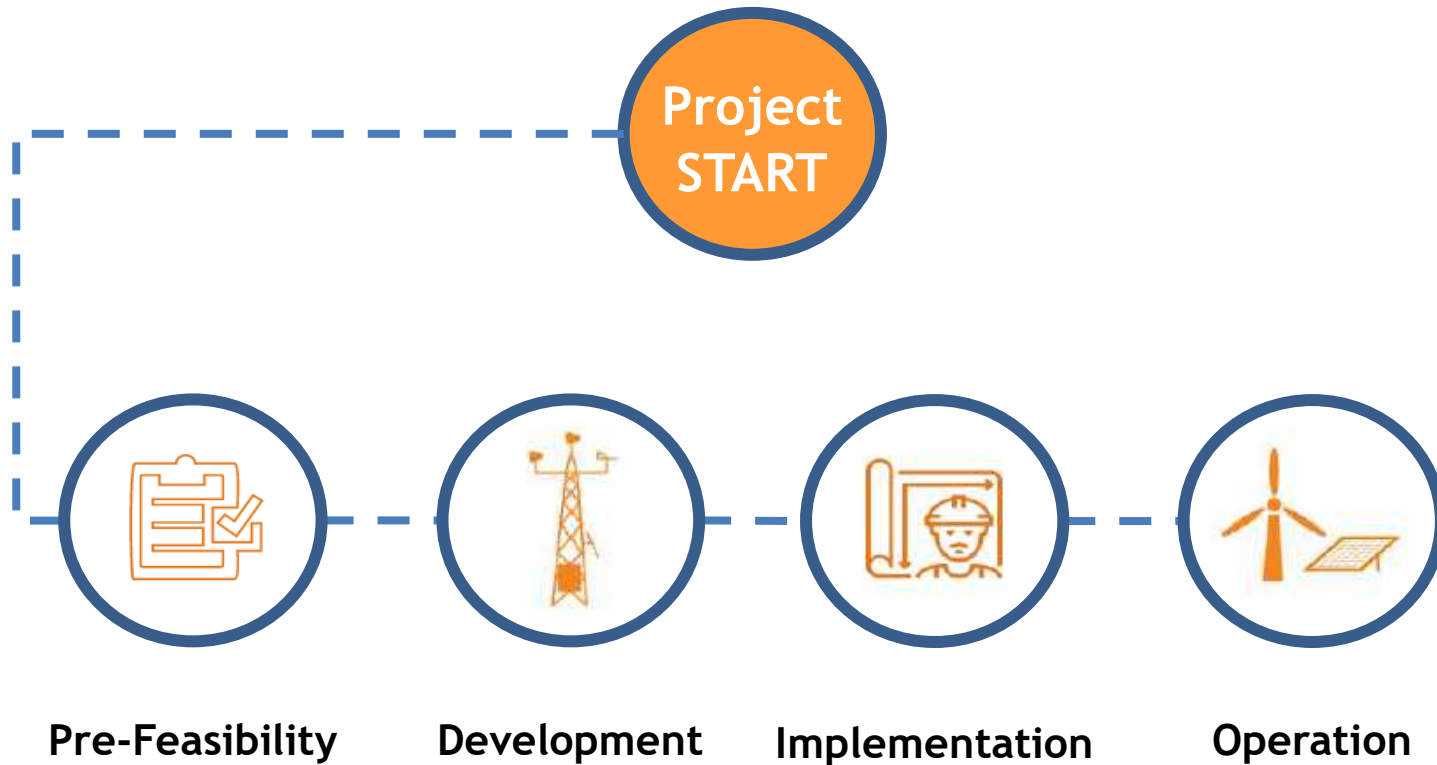
“...Over 40 000 MW of wind and solar energy projects around the world...”



# Main clients



# Services

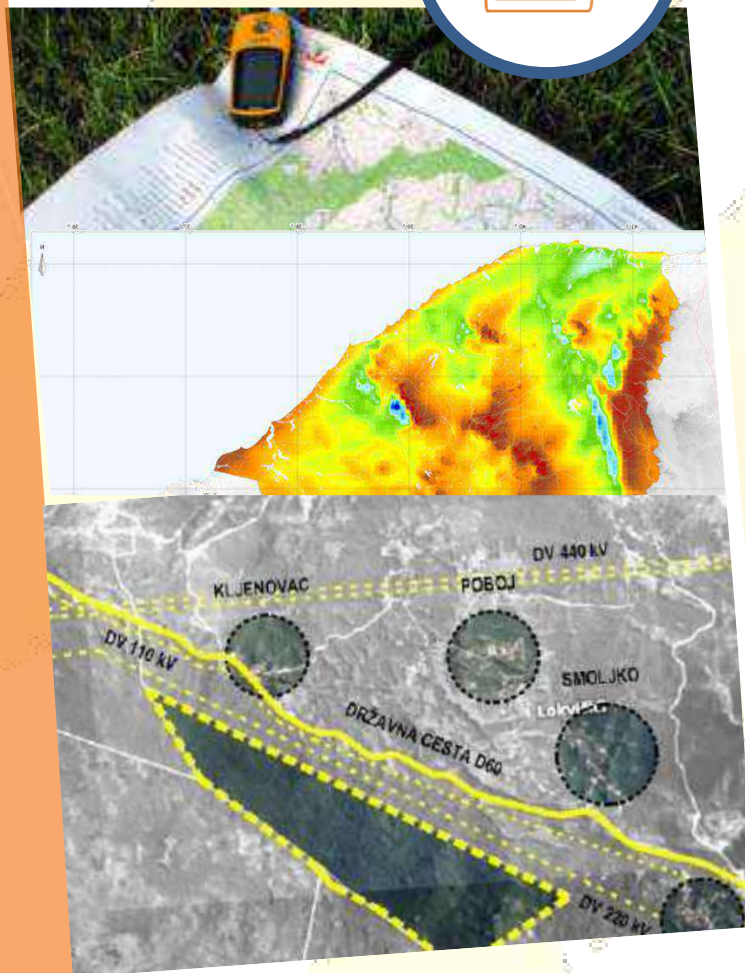




# Services - Pre-feasibility Stage

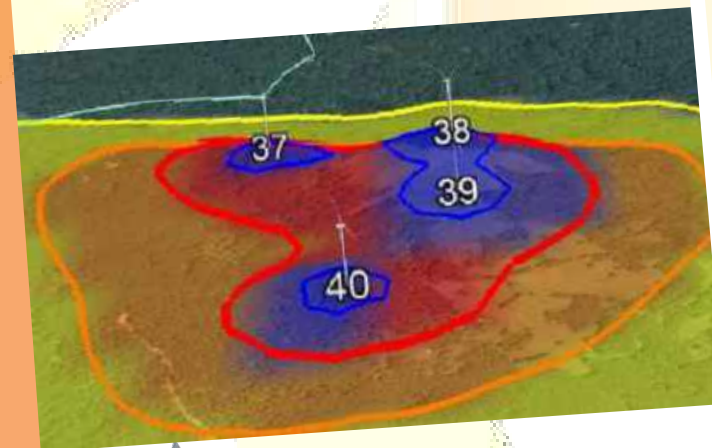
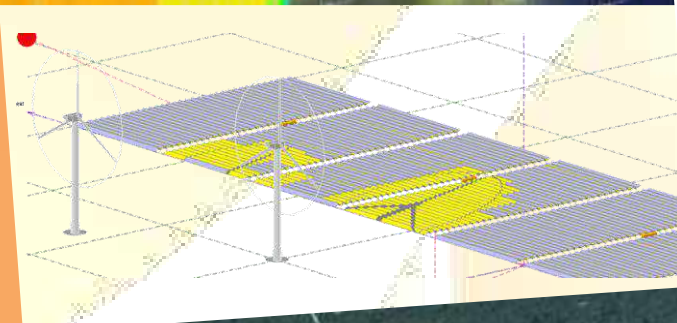
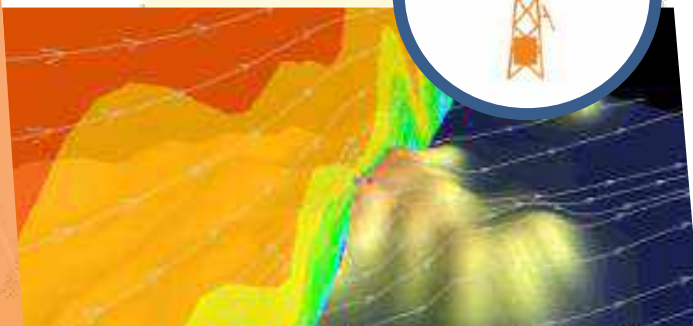


- Wind and Solar Resource mapping
- Preliminary site assessment
- Preliminary energy assessment
- Accessibilities evaluation
- Grid connection analysis
- Environmental constraints assessment



# Services - Development Stage

- Planning and supervision of measurement campaigns
- Met mast and instrument supply, installation and maintenance
- Data analysis, validation and reporting
- Micrositing
- Energy and site assessment
- Noise impact / Shadow flicker / Visual impact
- Basic and main/detailed design - Civil and Electrical
- Grid connection studies



# Services - Implementation Stage



- Technical Due Diligence
- Bankable independent energy & site assessment
- Feasibility studies
- Contracting support (TSA, Warranties, O&M, BoP)
- Owner's engineer and supervision
- Lender's engineer and supervision
- Power performance evaluation
- Estimation of wind and solar power generation profile price for long term power purchase agreements
- Financial evaluation of generation projects against long term power purchase agreement price





# Services - Operation Stage



- Energy production reanalysis
- Technical Due Diligence
- Independent operation
- Met mast installation and operation
- Lifelines installation and certification
- Turbine inspections
- Performance analysis
- Repowering feasibility studies
- Life extension analysis







[www.megajoule.pt](http://www.megajoule.pt)

Portugal • Brazil • Croatia • Turkey • Argentina

*“...Your global partner at your service...”*



APREN



PSEW



GWEC  
GLOBAL WIND ENERGY COUNCIL